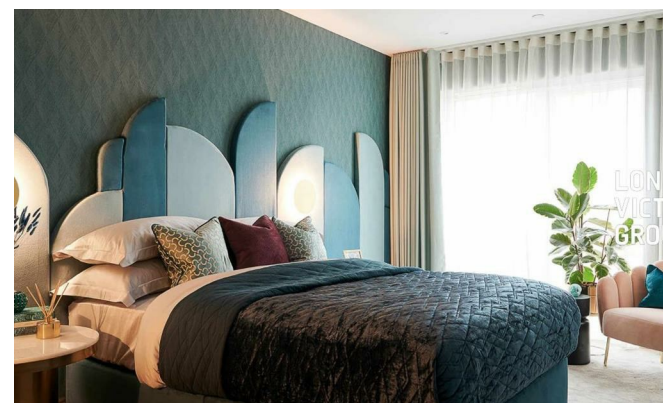


**LONDON
VICTORIA
GROUPS**



Bogart House, Filmworks walk

, Ealing, London W5 5BT

- Ealing Broadway/South Ealing Station
- 24-Hour Concierge
- EPC-B
- Landscaped Gardens
- Residents' Lounge
- CTB-E

£3,500 PCM

Local Authority **Ealing**
Council Tax Band **E**
EPC Rating **B**



London Office Office
Spaces Victoria, 25 Wilton Road, Pimlico,
London, SW1V 1LW

Contact
020 3084 3094
XL@londonvictoriagroups.co.uk
www.londonvictoriagroups.co.uk

Agents Note: Whilst every care has been taken to prepare these particulars, they are for guidance purposes only. All measurements are approximate and for general guidance purposes only and whilst every care has been taken to ensure accuracy, they should not be relied upon and potential buyers/tenants are advised to recheck the measurements.

